



Construction Technology

Location: COS, Visalia

Chairman:

Dennis Clark
559.280.4900
Farmersville High School

Rodney Attkisson
rattkisson@ctnc.org
Carpenter's Apprenticeship Committee for Northern California

ELIGIBILITY:

Refer to General Information and Rules page. Eligibility is limited to teams of 4. No individual entries are allowed.

SCOPE OF CONTEST:

1. The first section will be a short written test and will include shop math, identification of tools and/or machines, reading plans, and print details.
2. The second section will be manipulative and will require a four-student team to layout, cut and assemble a free-standing wall using hand tools and basic power tools. Each team will be scored on the following:
 - Reading of blueprints or drawings
 - Demonstration of safe work skills
 - Quality of work
 - Proper use of tools and materials
 - Organizational skills, including ability to work with others
 - Time (manipulative only)

SPECIAL NOTES:

1. In the event of power equipment malfunction, contestant will revert to the use of comparable hand tools.
2. Both written and manipulative portions of the event will be completed in a maximum of 3 HOURS.
3. A sample plan is attached.

EQUIPMENT AND MATERIALS:

To be supplied by chairperson:

- Building materials, including nails
- Work area
- Power supply

To be supplied by teams:

- Portable power tools
- Extension Cord (s) - #12 or larger
- Safety glasses
- Pencil(s)
- 16' to 30' tape measure
- Calculator
- Combination or tri-square
- Framing hammer

TIME:

Contest to begin at 9 a.m. sharp. Bring a sack lunch. Snack bar will be available on site.

TIE BREAKER:

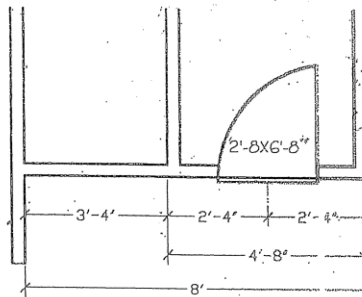
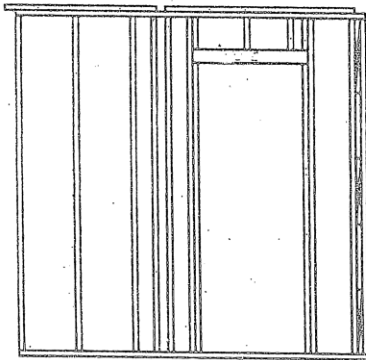
Ties will be broken by the highest score in the carpentry math test.

INSTRUCTIONS:

LAYOUT AND CONSTRUCT THIS WALL SECTION ACCORDING TO THE ATTACHED DRAWING. THE METHOD FOR BUILDING THE CORNER POST AND CHANNEL IS UP TO YOU.

YOU WILL BE SCORED ON THE QUALITY OF YOUR FINISHED PRODUCT, PROPER USE OF MATERIALS AND FASTENERS, THE EFFICIENCY OF YOUR MATERIALS USE, TEAMWORK AND SAFETY.

YOU MUST COMPLETE THIS PROJECT IN THE ALLOTTED TIME. THE JUDGES WILL GIVE YOU A 10 MINUTE WARNING BEFORE THE END OF TIME SO THAT YOU CAN FINISH AND CLEAN UP ON TIME.



SCALE: $3/8" = 1'-0"$

FRAMING ELEVATION

FLOOR PLAN